



GROW LOCAL FACT SHEET: WHAT TO PLANT AND WHEN?

Careful plant selection is an important part of successfully creating a garden bed. By choosing seeds or seedlings that will grow at the time of year you are planting them, and in the area that you are planting them, you are much more likely to have success. Seedlings on sale in a nursery may not necessarily be easily grown in your garden at the time they are on the sale rack, for example, beetroots are harder to grow in Esperance in summer than in winter.

Talk to your neighbours about what grows best in their garden, ask people on the Esperance Growers page for tips on what thrives when in their garden, and they may even be able to provide you with some home-grown seedlings perfectly suited for the time of year and your needs.

There are plenty of great sources of advice out there in the gardening world, including resources regarding what to plant and when. Some worthwhile resources:

“Grow your own patch”. Tanya Fong, Jemma Castle. *Choice Australia*. 28 August 2014.

<https://www.choice.com.au/outdoor/gardening/products-and-advice/articles/starting-a-vegetable-garden>. Accessed May 20 2016

“Planting vegetables from seeds and seedlings”. *For Dummies*. Wiley Publishing.

<http://www.dummies.com/how-to/content/planting-vegetables-from-seed-and-seedling.html>. Accessed May 20 2016.

Gardening Australia. Magazine and online at: <http://www.abc.net.au/gardening/>

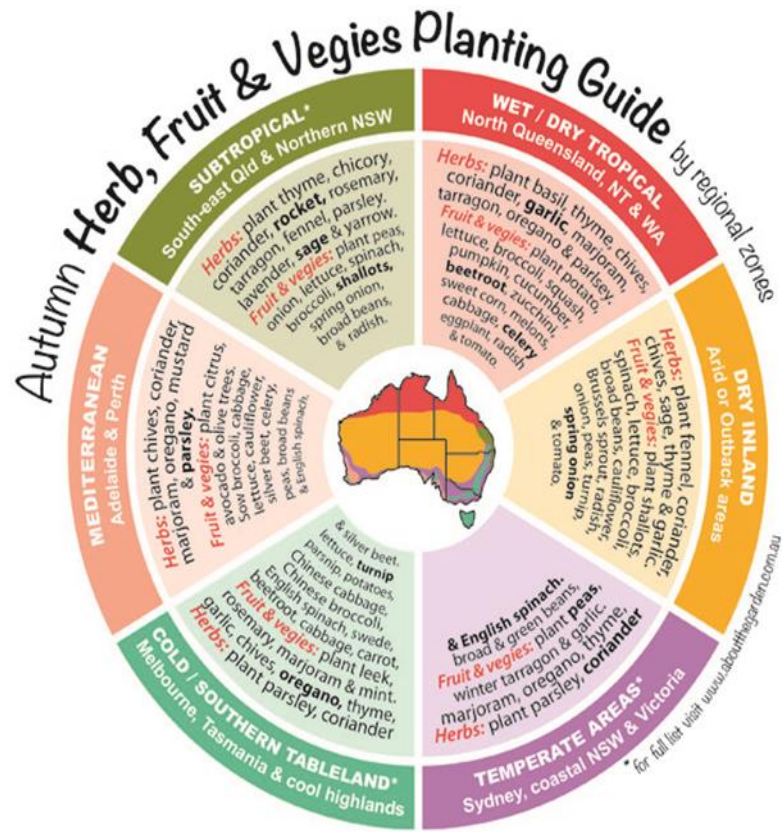
Diggers Club. Magazine if you are a member. <https://www.diggers.com.au/> (Members get a great seasonal garden guide poster which provides off-line access to seasonal planting in all areas of Australia!



Grow Local

POW SAE EN RAE OK MPT WA USA NZE

Skills for Sustainability





Grow
Local

PLANTING SEEDS
PLANTING SEEDS
PLANTING SEEDS
PLANTING SEEDS
PLANTING SEEDS
PLANTING SEEDS
PLANTING SEEDS
PLANTING SEEDS
PLANTING SEEDS
PLANTING SEEDS

Skills for Sustainability